



---

## About Us

---

[Our Mission](#)

---

## Leadership and Governance

---

### Leadership and Governance

---

[Related documents](#)

---

[Our Members and Partners](#)

---

[Centre for the Fourth Industrial Revolution](#)

---

[Communities](#)

---

[History](#)

---

[Klaus Schwab](#)

---

[Our Impact](#)

---

[Media](#)

---

[Pictures](#)

---

[Mapping Global Transformations](#)

---

[Contact Us](#)

---

[Careers](#)

---

[World Economic Forum LLC](#)

---

[Code of Conduct](#)

---

[Sustainability](#)

---

# Leadership and Governance

The World Economic Forum is the International Organization for Public-Private Cooperation.

The Forum strives to model world-class corporate governance, where values are as important as rules. Legitimacy, accountability, transparency and concerted action are the guiding principles of the Forum.

## Our Leadership

The Forum is chaired by Founder and Executive Chairman Professor Klaus Schwab. It's guided by a Board of Trustees, exceptional individuals who act as guardians of its mission and values, and oversee the Forum's work in promoting true global citizenship.

The Board of Trustees comprises outstanding leaders from business, politics, academia and civil society. In their work on the Board, members do not represent any personal or professional interests. To reflect the Board's multistakeholder status, its membership is divided equally between representatives of the business community and leaders from international organizations and civil society.



The Managing Board, chaired by the Forum's President, Børge Brende, acts as the executive body of the World Economic Forum. It ensures that activities fulfill the mission of the Forum and acts as its representative to outside parties.

The Managing Board has a collective executive responsibility for the Forum and reports to the Board of Trustees.

---

## Klaus Schwab - Founder and Executive Chairman



Studies at the Swiss Federal Institute of Technology in Zurich, University of Fribourg and Harvard University; degrees include doctorates in Mechanical Engineering and Economics (summa cum laude). 1972-2003, Professor of Business Policy, University of Geneva. 1971, founded the World Economic Forum as a not-for-profit foundation and built it into the foremost international institution for public-private cooperation; 1998, Co-Founder, with wife Hilde, Schwab Foundation for Social Entrepreneurship, supporting social innovation around the

world; 2004, Founder, Forum of Young Global Leaders; 2011, Founder, Global Shapers Community. Numerous honorary doctorates. Several honorary professorships. Recipient of international and highest national honours for initiatives undertaken in the spirit of entrepreneurship in the global public interest and for peace and reconciliation efforts in several regions of the world.

---

## Board of Trustees



**Mukesh D. Ambani**



**Marc Benioff**



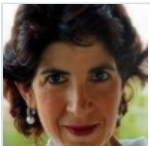
**Peter Brabeck-Letmathe**



**Mark Carney**



**Orit Gadiesh**



**Fabiola Gianotti**



**Al Gore**



**Herman Gref**



**Angel Gurría**

**André Hoffmann****Jim Yong Kim****Christine Lagarde****Jack Ma****Yo-Yo Ma****Peter Maurer****Min Zhu****Luis Alberto Moreno****Indra Nooyi****H.M. Queen Rania Al Abdullah of the Hashemite Kingdom of Jordan****L. Rafael Reif****David M. Rubenstein**

**David M. Rubenstein****Klaus Schwab****Jim Hagemann Snares****Heizo Takenaka****Ursula von der Leyen**

---

## **Børge Brende - President, Member of the Managing Board**



BA Norwegian Univ. of Science and Tech. Former: Minister of Foreign Affairs of Norway; Minister of Trade and Industry; Minister of the Environment; Political Adviser to Conservative Party Chairman; Chairman, Young Conservatives; CFO, KB-entrepreneur; Member, Municipal Executive Board, Trondheim; Deputy Chairman, Norwegian Conservative Party; Member, Storting, Norwegian Parliament; Member, Standing Committee on Finance and Economic Affairs and Deputy Chairman, Standing Committee on Energy and Environment; Chairman, UN Commission on Sustainable Development; Chairperson, PD Burma - Int'l Network of

Parliamentarians promoting democracy; Secretary-General, Norwegian Red Cross; International Vice-Chairman, China Council for Int'l Cooperation on Environment and Development (advisory board to the State Council); Chairman of the Board, Mesta (Norway's largest company in infrastructure maintenance); Member of the Board Norwegian School of Economics; Managing Director, World Economic Forum. Member of the Board, Statoil. Member of the UN High-level Advisory Group for Every Woman Every Child. Since 2017, President, World Economic Forum. Recipient of awards and honours, including: Order of the Aztec Eagle, Mexico (2018); Grand Cross of the Order of San Carlos, Colombia (2018);

Commander, Royal Norwegian Order of St Olav (2005); Cavaliere Di Gran Croce, Italy (2005); Grand Cross of the Order of the Phoenix, Greece (2004); "Gift to the Earth", WWF (2004).

---

## Managing Board



**Emma Benameur**



**Børge Brende**



**Julien Gattoni**



**W. Lee Howell**



**Jeremy Jurgens**



**Adrian Monck**



**Sarita Nayyar**



**Richard Samans**



**Olivier M. Schwab**



**Mustafâ Günenç**

**Mural Sommez****Dominic Kailash Nath Waughray****Saadia Zahidi****Alois Zwinggi**

---

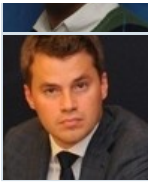
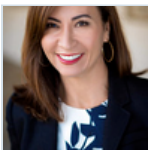
## Executive Committee

The Forum's activities are managed by its executive leadership. Led by Founder and Executive Chairman Professor Klaus Schwab, the leadership and staff of the Forum comprise exceptional individuals from all walks of life and over 60 nationalities. This global depth and experience ensures our ability to fully support our global membership and their engagement on global issues.

**David Aikman****Marisol Argueta de Barillas****Arnaud Bernaert****Matthew Blake****Roberto Bocca**

**Sebastian Buckup****Denise Burnet****Vanessa Candeias****Oliver Cann****Fon Mathuros Chantanayingyong****Nicholas Davis****Sean de Cleene****Sean Doherty****Silvio Dulinsky****Mirek Dusek****John Dutton****Makiko Eda**

**Maha Eltobgy****Malte Godbersen****Knut Haanaes****Zara Ingilizian****Philippe Isler****Troels Oerting Jorgensen****Elsie S. Kanza****Zvika Krieger****Ramya Krishnaswamy****Martina Larkin****Helena Leurent****Viraj Mehta**

**Stephan Mergenthaler****Derek O'Halloran****Mel Rogers****Stephan Ruiz****Paul Smyke****Mark Spelman****Masao Takahashi****Anne Toth****Terri Toyota****Stefano Trojani****Christoph Wolff****Justin Wood**



**JUSTIN WOOD**

---

© 2019 World Economic Forum [Privacy Policy](#) & [Terms of Service](#)